

Calendar of Events

Celebrate Texas Plates - Recipe of the Month

Watermelon Mint Salad with Jicama

- **Soil Test Drive** - Soil Samples due at the Extension Office by **July 26**.
- **July 2: Quilters**, 1:30pm, Harrison County AgriLife Extension Office.
- **July 9: Master Gardeners Monthly Meeting & Pot Luck**, 11:30am
Harrison County AgriLife Extension Office.
- **July 10: TEEA Ladies Monthly Meeting**, 1:30pm
Harrison County AgriLife Extension Office.
- **July 12: 4-H Archery Mini-Camp**, 8:00am to 12:00pm
Harrison County AgriLife Extension Office, \$10 Fee.
- **July 16: Quilters**, 1:30pm, Harrison County AgriLife Extension Office.
- **July 18: Agriculture for Teachers, Lunch & Learn**, 11:00am to 1:00pm
Harrison County AgriLife Extension Office, *Lunch Included - Free Event.*
- **July 19: Explore 4-H Mini-Camp**, 8:00am to 12:00pm
Harrison County AgriLife Extension Office, \$10 Fee.
- **July 26: 4-H Robotics Mini Camp**, 8:00am to 12:00pm,
Texas State Technical College. \$10 Fee.
- **August 13: Harrison County 4-H Awards Banquet**, 6:00pm
Harrison County AgriLife Extension Office. *RSVP by August 1.*
- **August 16: East Texas Forage Conference**, Earn 3 CEU's
Gold Hall, Hallsville. **RSVP by Aug. 5.** *Event Fee: \$20 per person.*
- **August 16: Private Applicator Training** in conjunction with the
East Texas Forage Conference, Gold Hall, Hallsville. **RSVP by Aug 5.**
8:00am: Registration, 8:30am to 12:30pm: Program. \$35 Fee.
- **August 19: Master Gardner Information Meeting**, 5:30 pm
Harrison County AgriLife Extension Office, *Free Event.*
- **October 19: *Save the Date***
Harrison County Tax Workshop for Property Owners.
Crossroads Baptist Church, 11763 FM 31, Marshall, TX 75672

Recipe of the Month

Watermelon Mint Salad with Jicama

Source: Mary Masterson, Extension Agent – BLT, Bexar County

Serves 6

Ingredients:

- 4 cups watermelon, cubed
- 2 cups blueberries
- 3 cups jicama, diced
- ¼ cup fresh mint, shredded (optional: additional for garnish)
- 3 tablespoons lime juice
- 1 tablespoon honey

Directions:

1. Combine the watermelon, blueberries, jicama, and shredded mint in a large serving bowl.
2. In a small bowl, whisk together the lime juice and honey. Pour over salad and toss lightly.
3. Optionally, garnish with fresh mint leaves, and serve immediately.

Nutrients Per Serving: 100 calories, 0 g total fat, 0 g saturated fat, 0 mg cholesterol, 0 mg sodium, 24 g carbohydrates, 5 g fiber, 15 g total sugar, 3 g added sugar, and 2 g protein



Kitchen Tip:

When cutting a whole watermelon, create a flat side by cutting the ends off first. Use the flat side as a stable base as you cut it into pieces.

Produce Tip:

Jicama can be eaten raw or cooked in different forms. Wash and remove the brown outer skin before consuming.



HARRISON COUNTY SOIL TEST DRIVE

LAST DAY TO TURN IN: **JULY 26, 2024**



SOIL SAMPLE PROCEDURE

- COLLECT YOUR SOIL SAMPLE(S) FOR: **LAWN & GARDEN** AND/OR **PASTURE** IN A SANDWICH-SIZED PLASTIC BAG.
- COME TO THE HARRISON COUNTY AGRILIFE EXTENSION OFFICE TO COMPLETE THE **SOIL SAMPLE ORDER FORMS** & **PAYMENT BY CHECK** FOR YOUR ORDER.
- MAKE CHECKS PAYABLE TO: **SOIL TESTING LABORATORY**
(NO CASH OR CREDIT CARDS)
- SOIL SAMPLES, COMPLETED FORMS & CHECK PAYMENTS MUST BE RECEIVED AT THE EXTENSION OFFICE BY **JULY 26**.

*SOIL SAMPLES WILL BE DELIVERED TO A&M SOIL LAB ON JULY 29.
SOIL TEST RESULTS WILL BE DELIVED VIA EMAIL.*

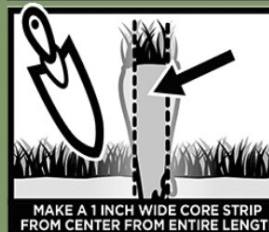
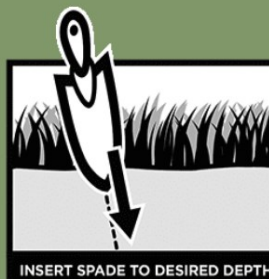
**HARRISON COUNTY
AGRILIFE EXTENSION**
2005 WARREN DRIVE
MARSHALL, TX 75672

QUESTIONS?
(903) 935 8413.



**TEXAS A&M
AGRILIFE
EXTENSION**

HOW TO GATHER SOIL SAMPLE CORES



Educational programs of the Texas A&M AgriLife Extension Service are open to all people without regard to race, color, sex, religion, national origin, age, disability, genetic information, veteran status, sexual orientation, or gender identity and will strive to achieve full and equal employment opportunity throughout Texas A&M AgriLife, the Texas A&M University System, U.S. Department of Agriculture, and the County Commissioners Courts of Texas Cooperating. Anyone needing special assistance at an Extension Program should contact the Texas A&M AgriLife Extension Office at (903) 935-8414 at least one week prior to the program or event to determine how reasonable accommodations can be made.



HARRISON COUNTY QUILTERS





Monthly Meetings
11:30am to 1:00pm
2nd Tuesdays



HARRISON COUNTY

4-H MINI SUMMER CAMPS

AGES 8-18

\$10 per camp

You do not have to
be an enrolled
4-H member to attend.

RSVP:



Location: Harrison County Extension Office 2005 Warren Drive, Marshall

July 12
8am-noon



Archery

Archers will learn the basic knowledge of archery and range safety, and learn the process of shooting competitively.

July 19
8am-noon



Explore 4-H

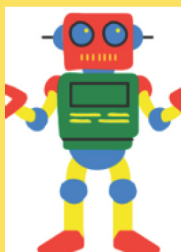
Campers will learn about different project areas such as Food & Nutrition, Horticulture ID, AG ID, Sewing, and Photography.

Location:



TSTC Marshall: 2625 E End Blvd S

July 26
8am-noon



Robotics

Campers will learn about the Lego Spike PRIME robotics kit, how to begin programming and learn about what opportunities TSTC offers.

Questions: Call 903-935-8513 or 903-935-8414

Email jennifer.dyson@ag.tamu.edu

The members of Texas A&M AgriLife will provide equal opportunities in programs and activities, education, and employment to all persons regardless of race, color, sex, religion, national origin, age, disability, genetic information, veteran status, sexual orientation, or gender identity and will strive to achieve full and equal employment opportunity throughout Texas A&M AgriLife. The Texas A&M University System, U.S. Department of Agriculture, and the County Commissioners Courts of Texas Cooperating. Individuals with disabilities who require an auxiliary aid, service or accommodation in order to participate in this meeting are encouraged to contact the County Extension Office at (903) 935-8414 one week prior to the meeting to determine how reasonable accommodations can be made.

Agriculture for Teachers Lunch & Learn

Earn 2 CPE Hours

May 30: 11:00am-1:00pm
or
July 18: 11:00am-1:00pm

Come join us to see what opportunities AgriLife Extension offers in the Classroom!

Harrison County AgriLife Extension Office
2005 Warren Dr, Marshall, TX 75672

Explore Curriculums

Hatching Eggs in a Classroom
Learn, Grow, Eat, GO!
Walk Across Texas
Balancing Food & Play
Stream Trailer
and many more!!!

AG Days

Southwest Dairy:
Mobile Milking Parlor

Texas Farm Bureau:
Mobile Learning Barn



TEXAS A&M
AGRI LIFE
EXTENSION

RSVP:



Questions:
Email: jennifer.dyson@ag.tamu.edu



Phone: 903-935-8413

THE MEMBERS OF TEXAS A&M AGRILIFE WILL PROVIDE EQUAL OPPORTUNITIES IN PROGRAMS AND ACTIVITIES, EDUCATION, AND EMPLOYMENT TO ALL PERSONS REGARDLESS OF RACE, COLOR, SEX, RELIGION, NATIONAL ORIGIN, AGE, DISABILITY, GENETIC INFORMATION, VETERAN STATUS, SEXUAL ORIENTATION, OR GENDER IDENTITY AND WILL STRIVE TO ACHIEVE FULL AND EQUAL EMPLOYMENT OPPORTUNITY THROUGHOUT TEXAS A&M AGRILIFE. THE TEXAS A&M UNIVERSITY SYSTEM, U.S. DEPARTMENT OF AGRICULTURE, AND THE COUNTY COMMISSIONERS COURTS OF TEXAS COOPERATING. INDIVIDUALS WITH DISABILITIES WHO REQUIRE AN AUXILIARY AID, SERVICE OR ACCOMMODATION IN ORDER TO PARTICIPATE IN THIS MEETING ARE ENCOURAGED TO CONTACT THE COUNTY EXTENSION OFFICE AT (903) 935-8414 ONE WEEK PRIOR TO THE MEETING TO DETERMINE HOW REASONABLE ACCOMMODATIONS CAN BE MADE.

4-H MINI SUMMER CAMPS

AGES 8-18

\$10 per camp

You do not have to
be an enrolled
4-H member to attend.

RSVP:



Location: Harrison County Extension Office 2005 Warren Drive, Marshall

July 12
8am-noon



Archery

Archers will learn the basic knowledge of archery and range safety, and learn the process of shooting competitively.

July 19
8am-noon



Explore 4-H

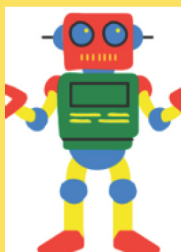
Campers will learn about different project areas such as Food & Nutrition, Horticulture ID, AG ID, Sewing, and Photography.

Location:



TSTC Marshall: 2625 E End Blvd S

July 26
8am-noon



Robotics

Campers will learn about the Lego Spike PRIME robotics kit, how to begin programming and learn about what opportunities TSTC offers.

Questions: Call 903-935-8513 or 903-935-8414

Email jennifer.dyson@ag.tamu.edu

The members of Texas A&M AgriLife will provide equal opportunities in programs and activities, education, and employment to all persons regardless of race, color, sex, religion, national origin, age, disability, genetic information, veteran status, sexual orientation, or gender identity and will strive to achieve full and equal employment opportunity throughout Texas A&M AgriLife. The Texas A&M University System, U.S. Department of Agriculture, and the County Commissioners Courts of Texas Cooperating. Individuals with disabilities who require an auxiliary aid, service or accommodation in order to participate in this meeting are encouraged to contact the County Extension Office at (903) 935-8414 one week prior to the meeting to determine how reasonable accommodations can be made.

2023-2024 HARRISON COUNTY 4-H AWARDS BANQUET

Harrison County Extension Office
2005 Warren Drive, Marshall, TX 75672

13 | AUGUST | 2024

06:00 PM

4-H MEMBERS- FREE
ADULTS- \$10/ PER MEAL

PULLED PORK/ BAKED POTATO BAR WITH ALL THE FIXINGS

RSVP by August 1st
Scan QR Code or call the office.
903-935-8413 or 903-935-8414



Come join us for a night of celebration!
We will be honoring the achievements
of our outstanding members.



The members of Texas A&M AgriLife will provide equal opportunities in programs and activities, education, and employment to all persons regardless of race, color, sex, religion, national origin, age, disability, genetic information, veteran status, sexual orientation, or gender identity and will strive to achieve full and equal employment opportunity throughout Texas A&M AgriLife. The Texas A&M University System, U.S. Department of Agriculture, and the County Commissioners Courts of Texas Cooperating. Individuals with disabilities who require an auxiliary aid, service or accommodation in order to participate in this meeting are encouraged to contact the County Extension Office at (903) 935-8414 one week prior to the meeting to determine how reasonable accommodations can be made.



EAST TEXAS

Forage Conference

AUGUST 16, 2024
GOLD HALL
101 ELM ST HALLSVILLE, TEXAS

3 CEU's
1 General
1 IPM
1 Law & Regs

\$20
per person

RSVP by 8/5/2024
at the
Gregg County office
(903) 236-8429

8:15 AM

Registration

9:00 PM

Year Round Beef Cattle Management Plan,
Dr. George Perry, Associate Professor,
Reproductive

10:00 PM

Sprayer Calibration,
Darren Rozell, Rozell Sprayer Manufacturing
Company

11:00 PM

Break

11:15 PM

Kaput Feral Hog Stewardship
Darren Rozell, Rozell Manufacturing
Company

12:15 PM

Lunch



1:00 PM

Impact of Soil Fertility as a Weed Control Mechanism
Clint Perkins, Smith County-Agriculture &
Natural Resources Agent

2:00 PM

Year-Long Pond Management Strategies
Tyson Keese, Pond Management Extension
Specialist

Individuals with disabilities who require an auxiliary aid, service, or accommodation in order to participate in this activity are encouraged to contact the Gregg County Extension Office at 903-236-8429 for assistance 2 weeks prior to event date. Educational programs of the Texas A&M AgriLife Extension Service are open to all people without regard to race, color, religion, sex, national origin, age, disability, genetic information or veteran status. The Texas A&M University System, U.S. Department of Agriculture, and the County Commissioners Court of Texas are cooperating.

PRIVATE PESTICIDE APPLICATOR'S LICENSE

Private Applicator Training

Friday, August 16, 2024

8:00am - Registration

8:30am to 12:30pm

In conjunction with the
East Texas Forage Conference

TEXAS A&M
AGRILIFE
EXTENSION

**Class Limited to 12 People
RSVP Today!**

(903) 935-8413

\$35 Fee

*Payable at the Door
Cash or Check ONLY*

**Prior to attending
Private Applicator Training**

Go to:

[TDA-PA-order-form-revised-11-22.pdf](#)
[\(tamu.edu\)](#)

to order your course materials!

YOUR UP-FRONT COST

- ✓ **Course Fee: \$35**
- ✓ **Study Materials: \$45**
- ✓ **TDA Testing Fee: \$64**
- ✓ **License Fee to TDA: \$100**

TOTAL COST: \$244.00

**This course will enable you to take
the TDA Exam in Tyler.
Upon passing the exam, you can
purchase and use restricted use &
state limited use pesticides.**

**RSVP by August 5.
Questions?
(903) 935-8413**

**Gold Hall
101 Elm Street
Hallsville, TX 75650**

Educational programs of the Texas A&M AgriLife Extension Service are open to all people without regard to race, color, sex, religion, national origin, age, disability, genetic information, veteran status, sexual orientation, or gender identity and will strive to achieve full and equal employment opportunity throughout Texas A&M AgriLife, the Texas A&M University System, U.S. Department of Agriculture, and the County Commissioners Courts of Texas Cooperating. Any one needing special assistance at an Extension Program should contact the Texas A&M AgriLife Extension Office at (903) 935-8414 at least one week prior to the program or event to determine how reasonable accommodations can be made.



Calling All Aspiring Gardeners!



Master Gardener Information Meeting Unleash Your Green Thumb!

Monday, August 19 at 5:30pm
Harrison County Extension Office

If you've ever considered becoming a Master Gardener, this event is tailored just for you. Join us at **5:30pm** on **August 19** for an informative meeting where experienced Master Gardeners will share insights into the process of becoming a Master Gardener. Learn from the experts themselves and discover how you can turn your passion for gardening into a rewarding and impactful journey.

Don't miss this chance to nurture your green thumb!



For more information about this event or to register, please contact:

TEXAS A&M
AGRI LIFE
EXTENSION

Harrison County Extension Office
2005 Warren Drive, Marshall, TX 75672
903-935-8413.



Educational programs of the Texas A&M AgriLife Extension Service are open to all people without regard to race, color, sex, religion, national origin, age, disability, genetic information, veteran status, sexual orientation, or gender identity and will strive to achieve full and equal employment opportunity throughout Texas A&M AgriLife, the Texas A&M University System, U.S. Department of Agriculture, and the County Commissioners Courts of Texas Cooperating. Anyone needing special assistance at an Extension Program should contact the Texas A&M AgriLife Extension Office at (903) 935-8414 at least one week prior to the program or event to determine how reasonable accommodations can be made.

SAVE THE DATE!

Join us for an informative session!

Harrison County Tax Workshop for Property Owners

TEXAS A&M
AGRILIFE
EXTENSION



THIS WORKSHOP IS FOR
LANDOWNERS TO DISCUSS
THE 3 KINDS OF PROPERTY TAX
EXEMPTIONS:

- AGRICULTURE
- WILDLIFE
- TIMBER

SATURDAY, OCTOBER 19, 2024

CROSSROADS BAPTIST CHURCH
11763 FM 31, MARSHALL, TX 75672

QUESTIONS? (903) 935-8413 or
Matt.Garrett@ag.tamu.edu

al programs of the Texas A&M AgriLife Extension Service are open to all people without regard to race, color, sex, religion, national origin, age, genetic information, veteran status, sexual orientation, or gender identity and will strive to achieve full and equal employment opportunity through MAgriLife, the Texas A&M University System, U. S. Department of Agriculture, and the County Commissioners Courts of Texas Cooperating. A special assistance at an Extension Program should contact the Texas A&M AgriLife Extension Office at (903) 935-8414 at least one week prior to the event to determine how reasonable accommodations can be made.