

Calendar of Events

*** State Spring Validation ***

June 17, 4:00pm to 6:00pm & June 18, 8:00am to 10:00am

- **June 4:** Quilters, 1:30pm, Harrison County AgriLife Extension Office.
- **June 11:** Master Gardeners Monthly Meeting, 11:30am, Harrison County AgriLife Extension Office.
- **June 12:** TEEA Ladies Monthly Meeting, 1:30pm, Harrison County AgriLife Extension Office
- **June 17:** State Spring Validation, 4:00pm to 6:00pm, 5505 Elysian Fields Road, Marshall
- **June 18:** State Spring Validation, 8:00am to 10:00am, 5505 Elysian Fields Road, Marshall
- **June 18:** Quilters, 1:30pm, Harrison County AgriLife Extension Office..
- **June 25:** 4-H Grilling 101, 9:00am to 12:00pm, Bear Creek Smoke House, Marshall. *Registration Fee: \$10 & 2 Canned Goods.*
- **July 12:** 4-H Archery Mini-Camp, 8:00am to 12:00pm, Harrison County AgriLife Extension Office, *\$10 Fee.*
- **July 18:** Agriculture for Teachers, Lunch & Learn, 11:00am to 1:00pm, Harrison County AgriLife Extension Office, *Lunch Included - Free Event.*
- **July 19:** Explore 4-H Mini-Camp, 8:00am to 12:00pm, Harrison County AgriLife Extension Office, *\$10 Fee.*
- **July 26:** 4-H Robotics Mini Camp, 8:00am to 12:00pm, Texas State Technical College. *\$10 Fee.*
- **August 13:** Harrison County 4-H Awards Banquet, 6:00pm Harrison County AgriLife Extension Office.
- **August 16:** East Texas Forage Conference, Earn 3 CEU's. Gold Hall, Hallsville. **RSVP by Aug. 5.** *Event Fee: \$20 per person.*



HARRISON COUNTY QUILTERS





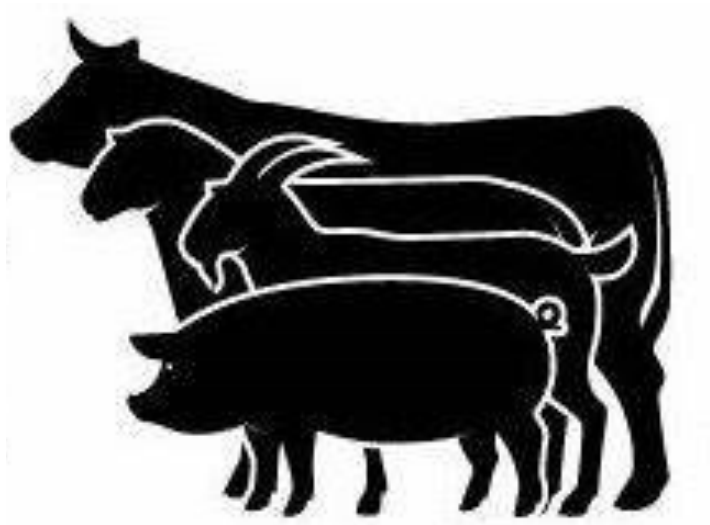
Monthly Meetings
11:30am to 1:00pm
2nd Tuesdays



HARRISON COUNTY

State Validation Spring 2024

**June 17, 4:00pm to 6:00pm
& June 18, 8:00am to 10:00am**



**5505 Elysian Fields Road
Marshall, TX 75672**



TEXAS A&M
AGRILIFE
EXTENSION

4-H GRILLING 101

TUESDAY, JUNE 25

9AM - 12PM



RSVP BY JUNE 14
SPACE IS LIMITED!

BEAR CREEK SMOKEHOUSE
10857 TX-154 MARSHALL, TX 75670

**AGES 8 - 18 * REGISTRATION FEE: \$10 & 2 CANNED GOODS
TO BE DONATED TO MISSION MARSHALL**

QUESTIONS ? (903) 935-8414 OR (903) 665-2421



Educational programs of the Texas A&M AgriLife Extension Service are open to all people without regard to race, color, sex, religion, national origin, age, disability, genetic information, veteran status, sexual orientation, or gender identity and will strive to achieve full and equal employment opportunity throughout Texas A&M AgriLife, the Texas A&M University System, U.S. Department of Agriculture, and the County Commissioners Courts of Texas Cooperating. Any one needing special assistance at an Extension Program should contact the Texas A&M AgriLife Extension Office at (903) 935-8414 at least one week prior to the program or event to determine how reasonable accommodations can be made.

4-H MINI SUMMER CAMPS

AGES 8-18

\$10 per camp

You do not have to
be an enrolled
4-H member to attend.

RSVP:



Location: Harrison County Extension Office 2005 Warren Drive, Marshall

July 12
8am-noon



Archery

Archers will learn the basic knowledge of archery and range safety, and learn the process of shooting competitively.

July 19
8am-noon



Explore 4-H

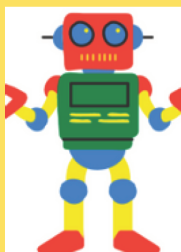
Campers will learn about different project areas such as Food & Nutrition, Horticulture ID, AG ID, Sewing, and Photography.

Location:



TSTC Marshall: 2625 E End Blvd S

July 26
8am-noon



Robotics

Campers will learn about the Lego Spike PRIME robotics kit, how to begin programming and learn about what opportunities TSTC offers.

Questions: Call 903-935-8513 or 903-935-8414

Email jennifer.dyson@ag.tamu.edu

The members of Texas A&M AgriLife will provide equal opportunities in programs and activities, education, and employment to all persons regardless of race, color, sex, religion, national origin, age, disability, genetic information, veteran status, sexual orientation, or gender identity and will strive to achieve full and equal employment opportunity throughout Texas A&M AgriLife. The Texas A&M University System, U.S. Department of Agriculture, and the County Commissioners Courts of Texas Cooperating. Individuals with disabilities who require an auxiliary aid, service or accommodation in order to participate in this meeting are encouraged to contact the County Extension Office at (903) 935-8414 one week prior to the meeting to determine how reasonable accommodations can be made.

Agriculture for Teachers Lunch & Learn

Earn 2 CPE Hours

May 30: 11:00am-1:00pm
or
July 18: 11:00am-1:00pm

Come join us to see what opportunities AgriLife Extension offers in the Classroom!

Harrison County AgriLife Extension Office
2005 Warren Dr, Marshall, TX 75672

Explore Curriculums

Hatching Eggs in a Classroom
Learn, Grow, Eat, GO!
Walk Across Texas
Balancing Food & Play
Stream Trailer
and many more!!!

AG Days

Southwest Dairy:
Mobile Milking Parlor

Texas Farm Bureau:
Mobile Learning Barn



TEXAS A&M
AGRI LIFE
EXTENSION

RSVP:



Questions:
Email: jennifer.dyson@ag.tamu.edu



Phone: 903-935-8413

THE MEMBERS OF TEXAS A&M AGRILIFE WILL PROVIDE EQUAL OPPORTUNITIES IN PROGRAMS AND ACTIVITIES, EDUCATION, AND EMPLOYMENT TO ALL PERSONS REGARDLESS OF RACE, COLOR, SEX, RELIGION, NATIONAL ORIGIN, AGE, DISABILITY, GENETIC INFORMATION, VETERAN STATUS, SEXUAL ORIENTATION, OR GENDER IDENTITY AND WILL STRIVE TO ACHIEVE FULL AND EQUAL EMPLOYMENT OPPORTUNITY THROUGHOUT TEXAS A&M AGRILIFE. THE TEXAS A&M UNIVERSITY SYSTEM, U.S. DEPARTMENT OF AGRICULTURE, AND THE COUNTY COMMISSIONERS COURTS OF TEXAS COOPERATING. INDIVIDUALS WITH DISABILITIES WHO REQUIRE AN AUXILIARY AID, SERVICE OR ACCOMMODATION IN ORDER TO PARTICIPATE IN THIS MEETING ARE ENCOURAGED TO CONTACT THE COUNTY EXTENSION OFFICE AT (903) 935-8414 ONE WEEK PRIOR TO THE MEETING TO DETERMINE HOW REASONABLE ACCOMMODATIONS CAN BE MADE.

4-H MINI SUMMER CAMPS

AGES 8-18

\$10 per camp

You do not have to
be an enrolled
4-H member to attend.

RSVP:



Location: Harrison County Extension Office 2005 Warren Drive, Marshall

July 12
8am-noon



Archery

Archers will learn the basic knowledge of archery and range safety, and learn the process of shooting competitively.

July 19
8am-noon



Explore 4-H

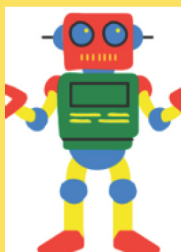
Campers will learn about different project areas such as Food & Nutrition, Horticulture ID, AG ID, Sewing, and Photography.

Location:



TSTC Marshall: 2625 E End Blvd S

July 26
8am-noon



Robotics

Campers will learn about the Lego Spike PRIME robotics kit, how to begin programming and learn about what opportunities TSTC offers.

Questions: Call 903-935-8513 or 903-935-8414

Email jennifer.dyson@ag.tamu.edu

The members of Texas A&M AgriLife will provide equal opportunities in programs and activities, education, and employment to all persons regardless of race, color, sex, religion, national origin, age, disability, genetic information, veteran status, sexual orientation, or gender identity and will strive to achieve full and equal employment opportunity throughout Texas A&M AgriLife. The Texas A&M University System, U.S. Department of Agriculture, and the County Commissioners Courts of Texas Cooperating. Individuals with disabilities who require an auxiliary aid, service or accommodation in order to participate in this meeting are encouraged to contact the County Extension Office at (903) 935-8414 one week prior to the meeting to determine how reasonable accommodations can be made.

SAVE THE DATE

2023-2024

HARRISON COUNTY 4-H
AWARDS BANQUET



Harrison County Extension Office
2005 Warren Drive, Marshall, TX 75672



13 | AUGUST | 2024
06:00 PM



Come join us for a night of celebration!
We will be honoring the outstanding achievements
of our outstanding members.



MORE INFORMATION TO COME!





EAST TEXAS

Forage Conference

AUGUST 16, 2024
GOLD HALL
101 ELM ST HALLSVILLE, TEXAS

3 CEU's
1 General
1 IPM
1 Law & Regs

\$20
per person

RSVP by 8/5/2024
at the
Gregg County office
(903) 236-8429

8:15 AM

Registration

9:00 AM

Sprayer Calibration

10:00 AM

Beef Cattle Scheduling

11:00 AM

Break

11:15 AM

Kaput Update

12:15 PM

Lunch



1:00 PM

2:00 PM

Picolinic Acid Training

Individuals with disabilities who require an auxiliary aid, service, or accommodation in order to participate in this activity are encouraged to contact the Gregg County Extension Office at 903-236-8429 for assistance 2 weeks prior to event date. Educational programs of the Texas A&M AgriLife Extension Service are open to all people without regard to race, color, religion, sex, national origin, age, disability, genetic information or veteran status. The Texas A&M University System, U.S. Department of Agriculture, and the County Commissioners Court of Texas Cooperating