

# Harrison County Ag/NR September Newsletter



TEXAS A&M  
**AGRI**LIFE  
EXTENSION

This year Harrison County 4-H members will have the option to sell 10 shirts to cover their yearly enrollment. There is a great chance close to a 1000 of these shirts will be around town. If you would like to be a sponsor for this years 4-H Enrollment Fundraiser, call the office for more information 903-935-8413.

# 4-H T-SHIRT SPONSOR PRICE BREAKDOWN



Back of the shirt



**SEPTEMBER 20, 2022**

**TDA  
APPLICATORS  
TRAINING-  
HARRISON COUNTY**

Registration starts 8:00AM

\$25 due at registration training will immediately follow

<https://agrillife.org/aes/how-to-obtain-a-private-applicator-license/>

Check out the website above to find out more information  
on testing and study material.

This is a training only. To help prepare you to take the  
TDA Private Applicator License Test.

Harrison County Extension Office  
102 W. Houston Marshall, TX  
For questions please call 903-935-8413



# **"Last Chance" CEU Video Series**

**Gregg County Extension Office**

**9/29/2022**

**\$50 for 8 CEU's**

**Call Gregg County Extension  
Office to reserve your spot.**

**Seating is limited.**

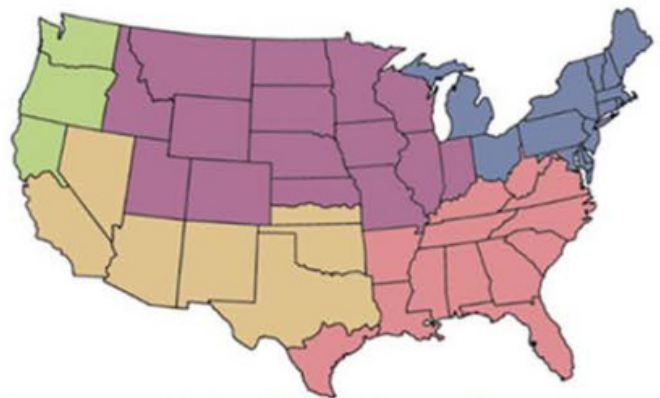
**903-236-8429**

**405 E Marshall Ave Ste #101,  
Longview, TX 75601**

# GARDENING TIPS FOR SEPTEMBER

## MARSHALL, TEXAS

- Fertilize your lawn. Lawns fertilized in the fall are better equipped to survive the winter. Reseed in bare patches.
- Begin cutting back on watering of the garden and lawn (except newly seeded areas) so that plants can prepare for dormancy (not growth).
- Save the seeds from your self-pollinating flowers, such as marigolds, cosmos, or coneflowers, to plant next spring by drying them and storing them in closed containers.
- Plant spring wildflowers now.
- If you purchased spring-blooming bulbs, plant them as soon as you get them.
- In some areas, you can plant cool-season vegetables, such as cabbage, broccoli, carrots, garlic, Swiss chard, lettuce, beets, kale, parsnips, radishes, peas, spinach, turnips, and celery. See our seed-starting chart on [Almanac.com/Gardening](http://Almanac.com/Gardening).
- Plant cool-season annuals, such as pansies and snapdragons, when the temperature begins to decrease.
- Plant any perennials. Divide and replant overcrowded perennial beds. Remember to apply a layer of organic matter to the new bed.
- Use only phosphate fertilizers on perennials and bulbs (no nitrogen).
- Do not fertilize annuals.
- Cut back annuals when they finish flowering.
- Plan to seed cool-season lawns, such as bluegrass or ryegrass, towards the end of the month; fall is the best time to establish such lawns.
- Place tropical houseplants under shade trees to prepare them for winter indoors.



# MARSHALL Residents Only

The Change Club projects will focus on making healthy eating and physical activity easier for communities by focusing on the built environment, or the environment in which we live, work and play. Information collected will show how the project affected the health of Change Club members like myself, as well as that of their immediate friends, families and communities, including you.

The goal of the Change Club evaluation is to measure the effectiveness of these projects so we can build better programs for promoting health.

You could earn \$75 gift card or cash (via the Zelle app) per timepoint for completing activities annually now (baseline), and again in approximately 12 months, 24 months, and lastly in 36 months. Activities include completing an online survey, an online food diary, and physical activity tracking. Over the duration of the project, you can earn up to \$375.

In addition, if you complete all activities at baseline, you will be entered into a drawing to win \$100. Five participants will be selected per community, putting your odds of winning at around 1 in 20.

[www.changeclubproject.com](http://www.changeclubproject.com)



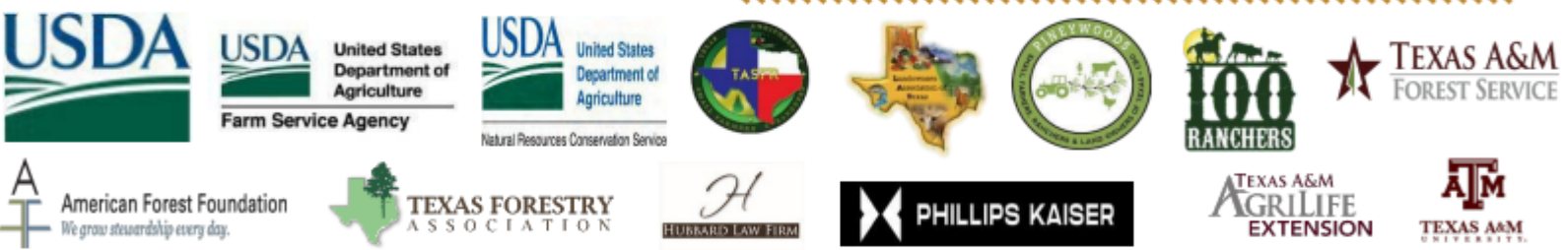


# Small Farm Institute

## Sustainable Forestry & African American Land Retention Workshop

### TOPICS

- Heirs' Property
- Forest Management
- Timber Harvesting
- Technical Assistance and Financial Resources Available Through USDA NRCS and FSA



FOR ADDITIONAL INFORMATION: Mary Derting, CEP County Extension Agent, PH: (903) 665-2421, [mgderting@pvamu.edu](mailto:mgderting@pvamu.edu) or Angela Moore, Program Coordinator, PH: (936) 261-5002 or Email: [almoore@pvamu.edu](mailto:almoore@pvamu.edu).

**Date:**  
**09.08.22**  
**Thursday**

**FREE!!!**  
Email Agent Mary Derting at [mary.derting@ag.tamu.edu](mailto:mary.derting@ag.tamu.edu)

**Time:**  
**1:00pm-4:00pm**

The Cooperative Extension Program does not discriminate against anyone regardless of their race, color, national origin, religion, sex, gender identity (including gender expression), sexual orientation, disability, age, marital status, family/parental status, income derived from a public assistance program, political beliefs, reprisal or retaliation for prior civil rights activity, in any program or activity. Persons who require communication in a language other than English or with a disability who require alternative means of communication of program information (braille, large print, audiotape, etc.) should contact Mr. Corey Hicks at 936-544-7502 in advance.

# Harrison County Youth Livestock Calendar 2022-2023

## September 2022

- Sheep/goat tags (must prepay) and heifer UINs (pay @validation) are ordered for major stock shows

## October 2022

- 3<sup>rd</sup> week (date TBD) Farm City Week Steer entries are due. Validation for goat, sheep & heifers @5505 HWY 31 Marshall, TX

## November 2022

## December 2022

- 2<sup>nd</sup> weekend (December 10<sup>th</sup>) Goat, Sheep & Pig tag in for Farm City Week will take place at three separate locations (Hallsville, Marshall & Waskom Ag Farms)
- Broiler orders & entries are due. \$2 per chicken to be delivered in February

## January 2023

## February 2023

- Chickens arrive for Farm City Week
- Rabbit Validation

## March 2023

- 1<sup>st</sup> Farm City Week Scholarship Applications due
- 20<sup>th</sup> Voice of Agriculture Speech Contest
- 21<sup>st</sup> Broiler & Rabbit weigh in  
Broiler Show  
Rabbit Show  
1Weigh in of all Swine, Lambs, Goats & Steers and Heifer check in  
Lamb show directly followed by the Goat show (in large arena)
- 22<sup>nd</sup> Swine Show  
Steer Show (in large arena)  
Jr. & Sr. Showmanship directly following the steer show Heifer show directly following showmanship
- 23<sup>rd</sup> Check-in and set up of Ag Mechanics projects  
Judging of Ag Mechanics projects  
Dinner  
Scholarships & speech contest presentation. Auction immediately following

## April 2023

- Order tags & UINs for major shows, State Fair and Harvest Festival. All tags are prepaid except for heifers who are paid at validation.

## May 2023

- Late fees for all tags apply

## June 2023

- 3<sup>rd</sup> week of June (day TBD) Validation for Heifers, Steers & State Fair sheep, and goats. @5505 HWY 31 Marshall, TX

## July 2023

## August 2023

- 1<sup>st</sup> week of August (date TBD) Validation for Harvest Festival. ALL Harvest Festival exhibitors need quality count verification



# Planting Winter Forages

Late September-early October is the ideal time for planting cool season annual forages such as annual ryegrass, small grains (rye, wheat or oats) and/or cool season annual legumes. Anytime we are incorporating new forages into our production systems it is important to make sure to match the forage species to your location (soil type, average annual rainfall, intended use, etc). If you have questions about forages appropriate for your area contact your local county extension agent.

Three methods for establishing cool-season annual grasses include planting into a prepared seedbed, the light disking method and over-seeding or sod-seeding into undisturbed soil.



Over-seeding warm-season perennial grasses with cool-season legumes offers several benefits:

1. Grazing can begin 4 to 6 weeks earlier grazing in the spring, which reduces the winter feeding period.
2. Legumes typically have higher nutritive value than do most grasses.
3. Legumes fix nitrogen from the atmosphere and make it available to the pasture system.
4. A good stand of legumes can help control spring weeds by competing for space, water, sunlight and nutrients.

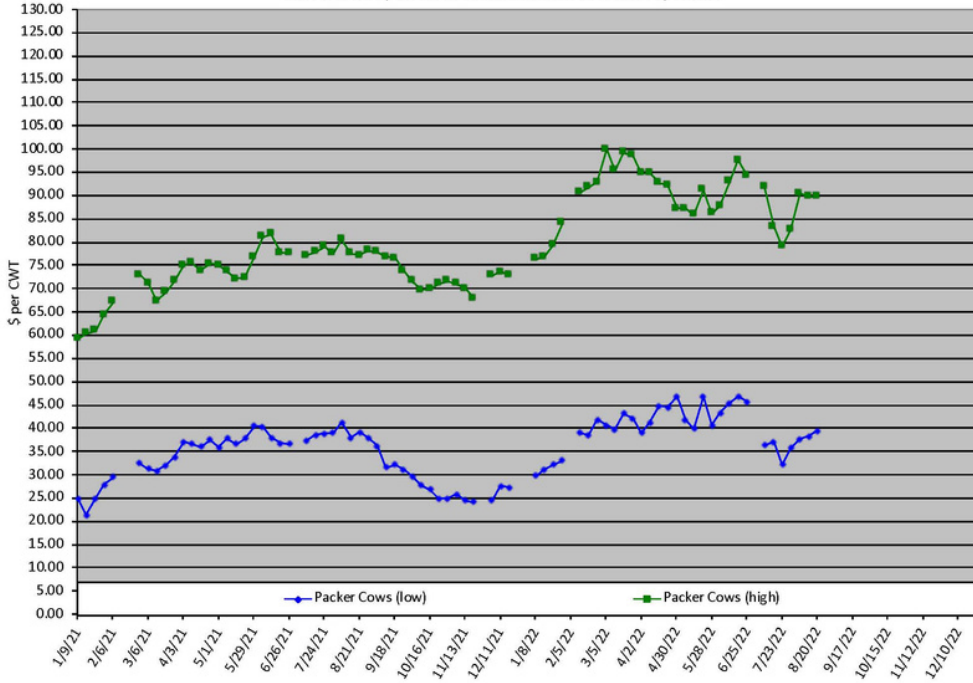
**Vanessa Corriher-Olson, Ph.D.**  
**Forage Extension Specialist**  
**Soil & Crop Sciences**  
**Overton, TX**  
[vacorriher@ag.tamu.edu](mailto:vacorriher@ag.tamu.edu)

# Cattle Price Trends

## Packer Cow Price Trends

Trend of High and Low Prices Reported for Packer Cows, Average of 6 East & Central Texas Livestock Auctions

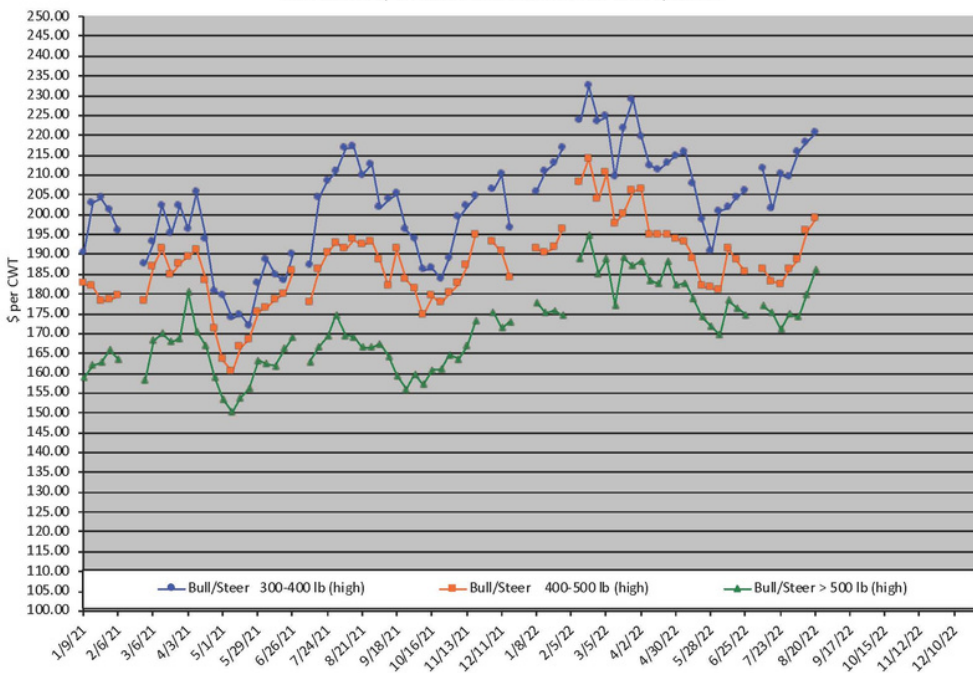
For a weekly email copy of this chart please subscribe at <http://beeffax.tamu.edu> or contact a Texas A&M AgriLife County Extension Agent  
Chart created by Dr. Jason Banta, Extension Beef Cattle Specialist



## Calf Price Trends

Trend of the Highest Price Reported for Various Weight Calves, Average of 6 East & Central Texas Livestock Auctions

For a weekly email copy of this chart please subscribe at <http://beeffax.tamu.edu> or contact a Texas A&M AgriLife County Extension Agent  
Chart created by Dr. Jason Banta, Extension Beef Cattle Specialist



Cattle price trends for the week ending 8/20/22. The graphs show the average of the highest prices reported for 6 livestock auction markets located in East and Central Texas.

TEXAS A&M  
**AGRI**LIFE  
EXTENSION

# Stay in Touch!

102 W. Houston Marshall, TX

903-935-8413



Harrison County -

AgriLife Extension Service